

ANNALINA E MARIO LEVI

ITINERARIA PICTA

CONTRIBUTO ALLO STUDIO
DELLA TABULA PEUTINGERIANA

“L'ERMA”, di BRETSCHNEIDER - ROMA

1967

RB 10217

L 664

- N. 1 - PALLOTTINO, M. - *Il grande fregio di Traiano*. 1938
- N. 2 - PESCE, G. - *I rilievi dell'anfiteatro campano*. 1941
- N. 3 - SQUARCIAPINO, M. - *La scuola di Afrodisia*. 1943
- N. 4 - BLOCH, H. - *I bolli laterizi e la storia edilizia romana*. 1947
- N. 5 - CAPRINO, COLINI, GATTI, PALLOTTINO, ROMANELLI - *La colonna di Marco Aurelio*. 1955
- N. 6 - BECATTI, G. - *La colonna coclide istoriata*. 1960
- N. 7 - LEVI, A. E M. - *Itineraria Picta. Contributo allo studio della Tabula Peutingeriana*. 1967

529 943

Universitätsbibliothek
Göttingen

80/21079

ITINERARIA PICTA

Contributo allo studio della Tabula Peutingeriana

Abbreviazioni	Pag.	7
Introduzione	»	13

PARTE PRIMA

La TABULA PEUTINGERIANA E LA SUA POSIZIONE NELLA CARTOGRAFIA ANTICA	»	17
1) La Tabula Peutingeriana in generale	»	17
2) La « deformazione »	»	23
3) Gli itinerari	»	25
4) Altri tipi di carte geografiche	»	32
5) Le vignette nella cartografia fino al v secolo	»	33
a) Carte geografiche a vignette più schematiche	»	35
b) Carte a vignette schematiche « secondarie »: i manoscritti tecnici	»	39
c) Il Virgilio Vaticano 3225	»	42
d) Cartografia e figurazioni di paesaggio	»	44
6) Le vignette nella cartografia del vi secolo	»	51
7) Le vignette nella cartografia medievale	»	57

PARTE SECONDA

LE VIGNETTE DELLA TABULA PEUTINGERIANA	»	65
1) Classificazione	»	65
2) I tipi di vignette più frequenti	»	66
a) La doppia torre	»	66
b) L'edificio « a tempio »	»	82
c) Le « aquae »	»	85
d) Varianti e dettagli	»	90

3) Relazione tra il <i>Cursus Publicus</i> e i tre tipi di vignette più frequenti	Pag.	97
4) Altre vignette	»	124
a) Porti e fari	»	124
b) Are	»	130
c) La « crypta neapolitana ».	»	131
d) Horrea	»	132
5) I rifacimenti della Tabula	»	134
a) Cerchia di mura	»	134
b) Personificazioni	»	151
c) Le aggiunte medievali	»	159
<i>Appendice</i> : Le mura « con torri a terra » o « ribaltate »	»	163
CONCLUSIONI	»	169
<i>Indice analitico</i> (Parte I e II)	»	177
<i>Addenda</i>	»	189

PARTE TERZA

TAVOLE D'AGGIUNTA (Sintesi grafica)

Premessa	»	193
1) Classificazione delle vignette secondo le loro categorie e varianti	»	195
2) Elenco delle località indicate con vignetta, secondo la loro categoria e variante	»	213
3) Indice alfabetico di tutte le località indicate con vignetta	»	225
4) Tavola comparativa MILLER-PAULY WISSOWA	»	233
<i>Indice delle tavole fuori testo</i>	»	249

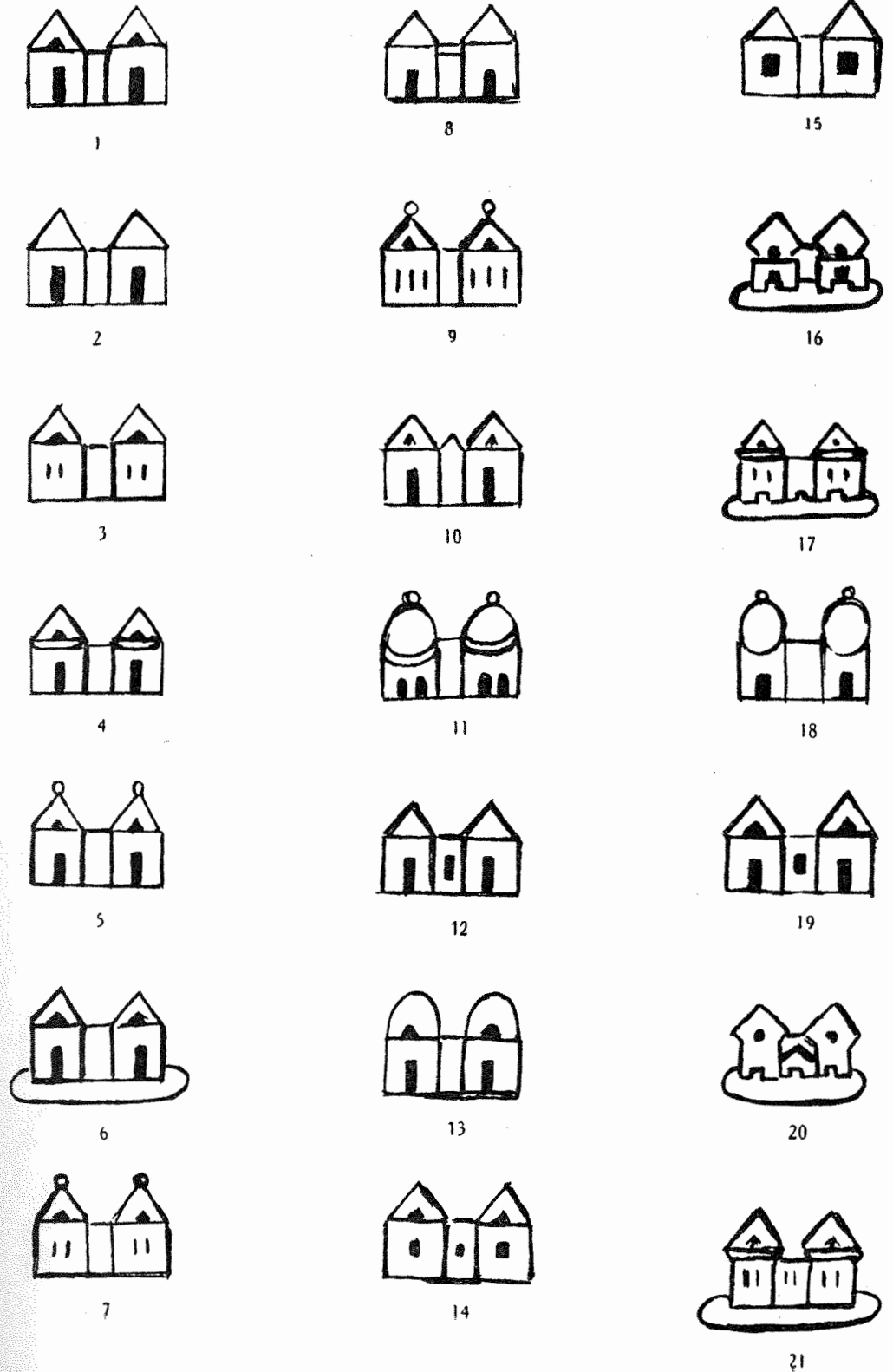
1) CLASSIFICAZIONE DELLE VIGNETTE
SECONDO LE LORO CATEGORIE E VARIANTI

- A - le due torri: I) unite da corpo centrale;
II) staccate nella parte superiore;
III) addossate;
IV) con una terza torre aggiunta.
- B - gli edifici « a tempio »,
C - le « aquae »,
D - edifici ad elementi paralleli,
E - le cerchia di mura,
F - le tre grandi vignette,
G - i porti, i fari e le figurazioni varie.

TOTALE DELLE VIGNETTE PER CIASCUNA CATEGORIA

CATEGORIA A (le due torri)	Totale 429
A, I (corpo centrale)	Tot. 301
A, II (staccate in alto)	» 92
A, III (addossate)	» 28
A, IV (con terza torre)	» 5
A, (vignetta confusa)	» 3
CATEGORIA B (edifici « a tempio »)	» 44
CATEGORIA C (edifici « aquae »)	» 52
CATEGORIA D (edifici ad elementi paralleli)	» 10
CATEGORIA E (cerchia di mura)	» 6
CATEGORIA F (le grandi vignette)	» 3
CATEGORIA G (porti, fari e figurazioni varie)	» 11
TOTALE VIGNETTE TABULA PEUTINGERIANA 555	

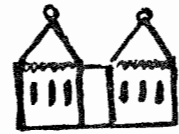
A (le due torri) - I (unite da corpo centrale)



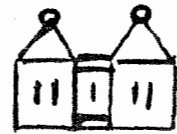
A (le due torri) - I (unite da corpo centrale)



22



29



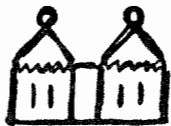
36



43



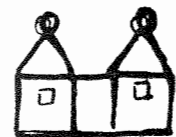
23



30



37



44



24



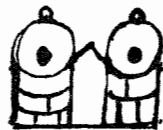
31



38



45



25



32



39



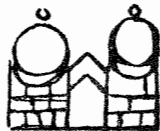
46



26



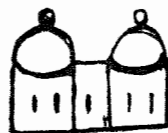
33



40



47



27



34



41



48



28



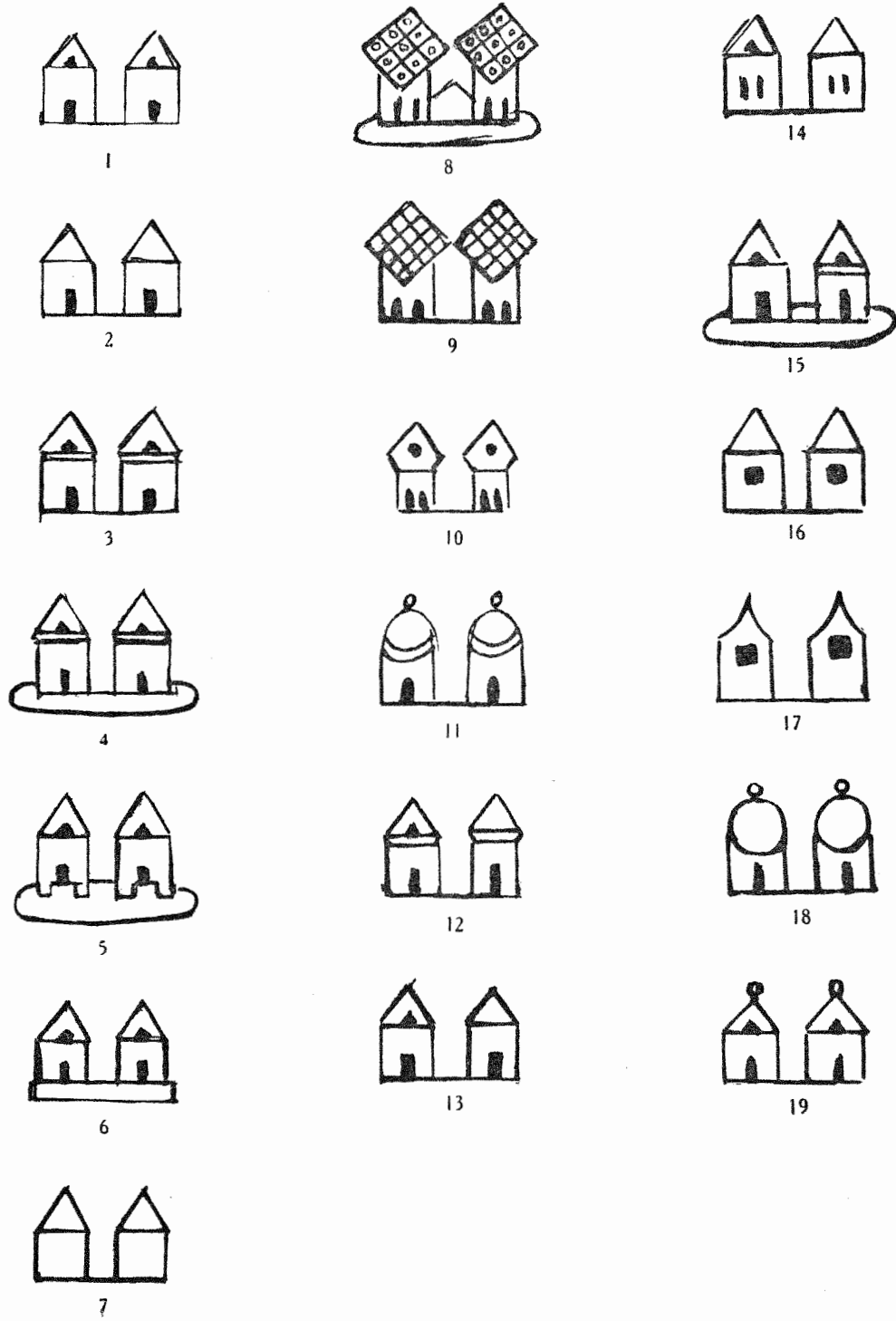
35



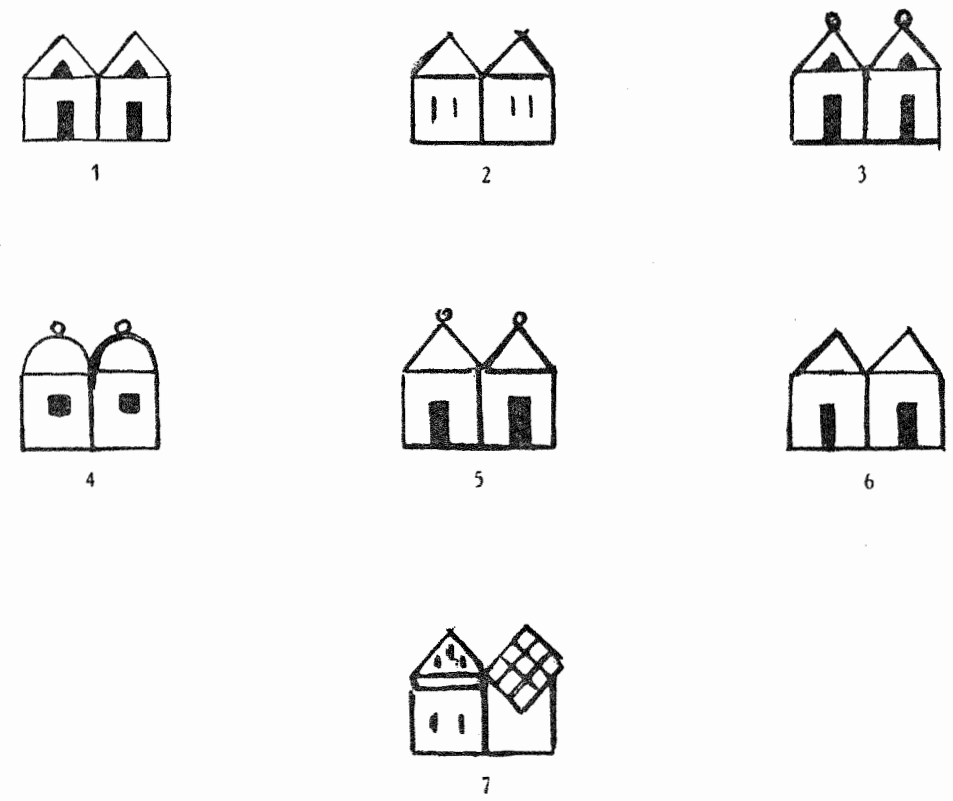
42

A (le due torri) - I (unite da corpo centrale)

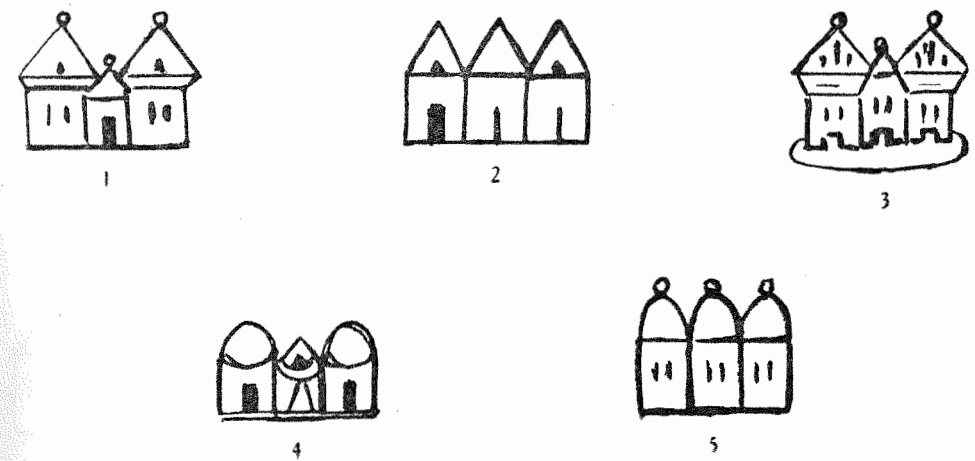
A (le due torri) - II (staccate nella parte superiore)



A (le due torri) - III (addossate)



A (le due torri) - IV (con una terza torre aggiunta)



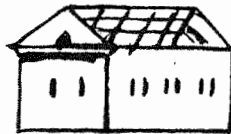
B (gli edifici «a tempio»)



1



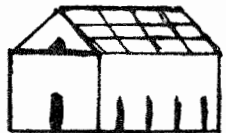
7



13



2



8



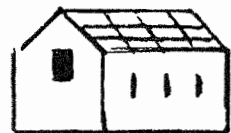
14



3



9



15



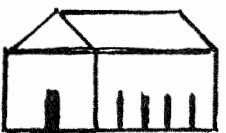
4



10



16



5



11



17



6



12



18

B (gli edifici «a tempio»)



19



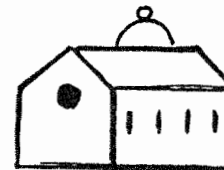
25



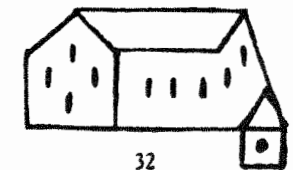
31



20



26



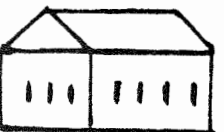
32



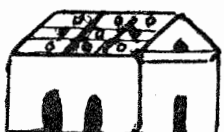
21



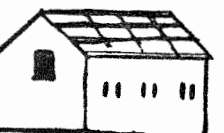
27



22



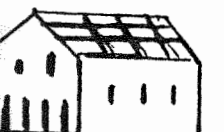
28



23



29

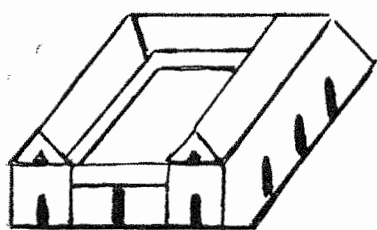


24

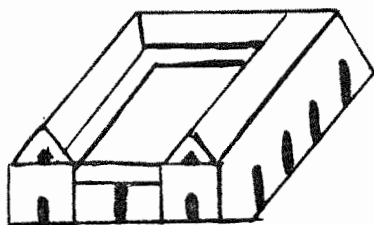


30

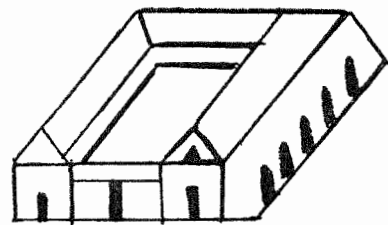
C (le « aquae »)



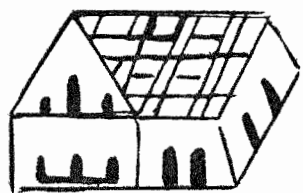
1



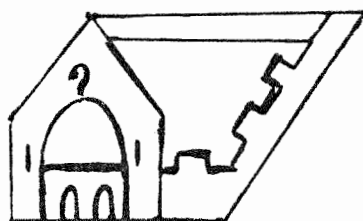
2



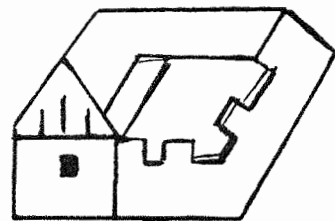
3



4



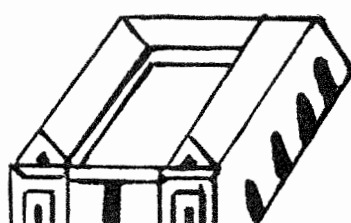
5



6



7



8



9

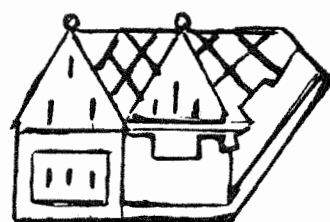
C (le « aquae »)



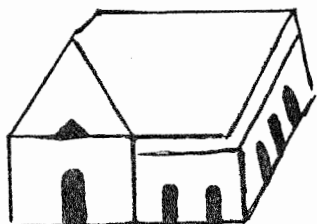
10



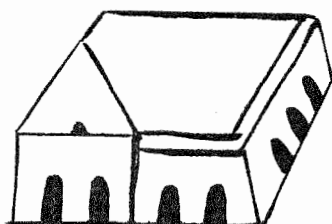
11



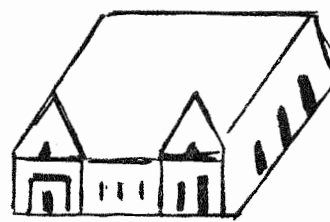
12



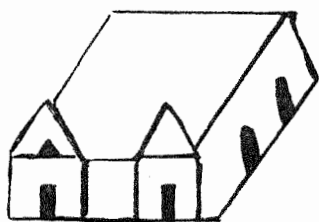
13



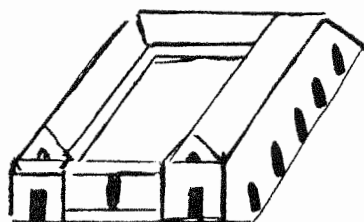
14



15



16

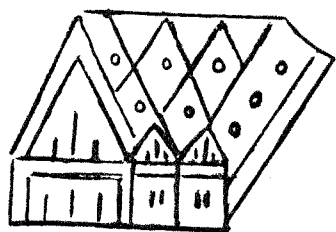


17



18

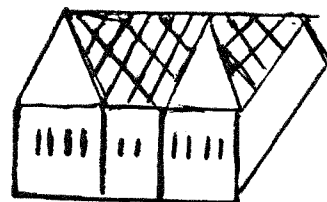
C (le « aquae »)



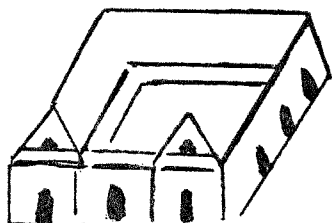
19



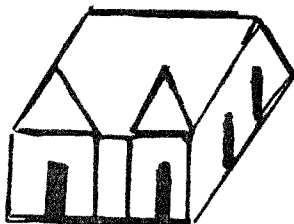
20



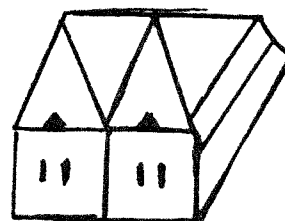
21



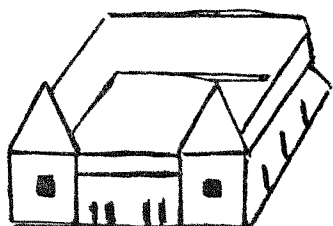
22



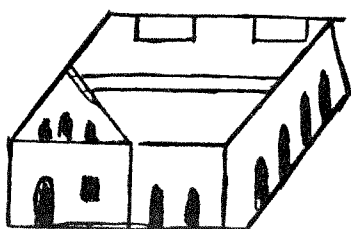
23



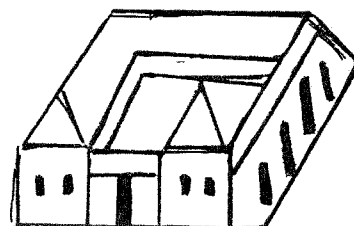
24



25

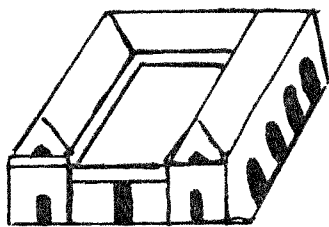


26

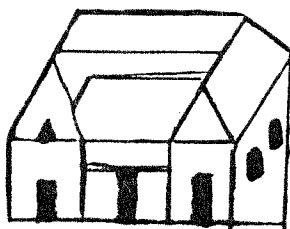


27

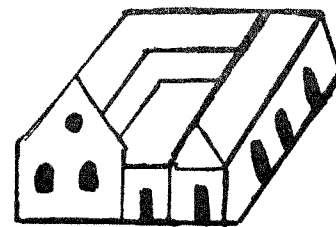
C (le « aquae »)



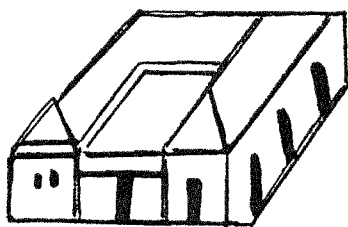
28



29

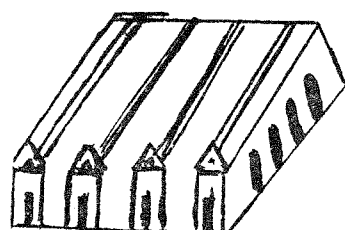


30

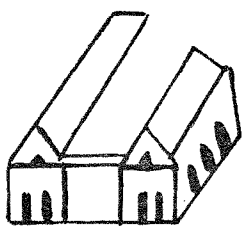


31

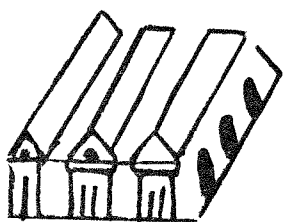
D (edifici ad elementi paralleli)



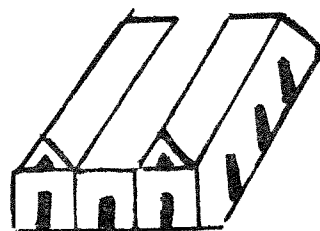
1



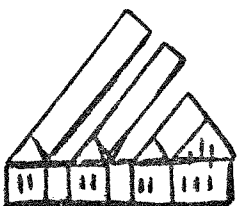
2



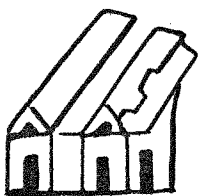
3



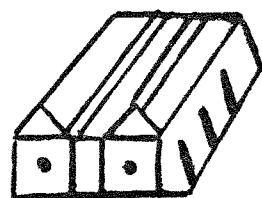
4



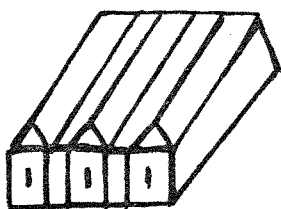
5



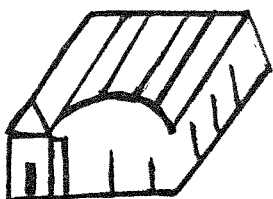
6



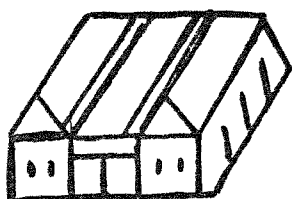
7



8

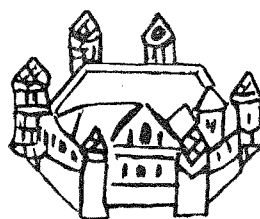


9

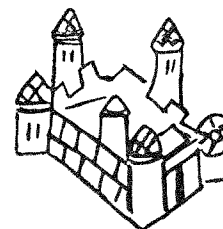


10

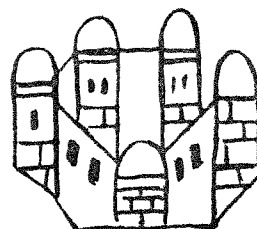
E (le cerchia di mura)



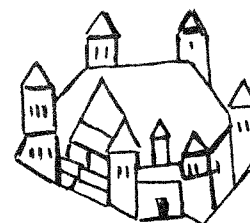
Aquileia Seg. III, 5



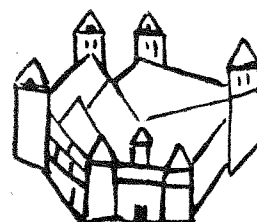
Ravenna IV, 1



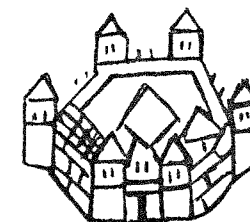
Tessalonice VII, 2



Nicomedia VIII, 2

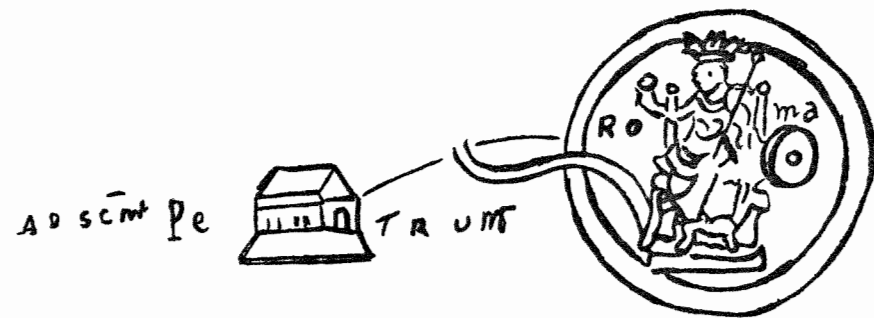


Nicea VIII, 2



[Ancyra] VIII, 4

F (le 3 grandi vignette)



Seg. IV, 5

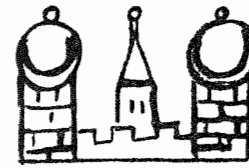


Seg. VIII, 1



Seg. IX, 4/5

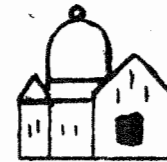
G (i porti, i fari e le figurazioni varie)



Ad matricem V, 5



Vadis. Sobates II, 4



Tragurio V, 3



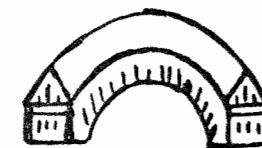
[Crypta neapolitana] V, 4



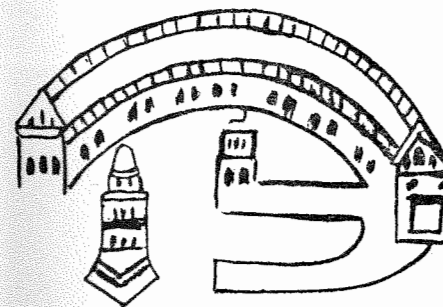
Arephilenorum (2) VII, 2



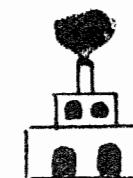
a) Ara Alexandri XI, 3
 b) Hic Alexander Responsum accepit (2) XI, 5



Fossis Marianis I, 5



[Portus Augusti] IV, 5



a) [Faro nel Bosforo] VIII, 1
 b) [Faro di Alessandria] VIII, 3